

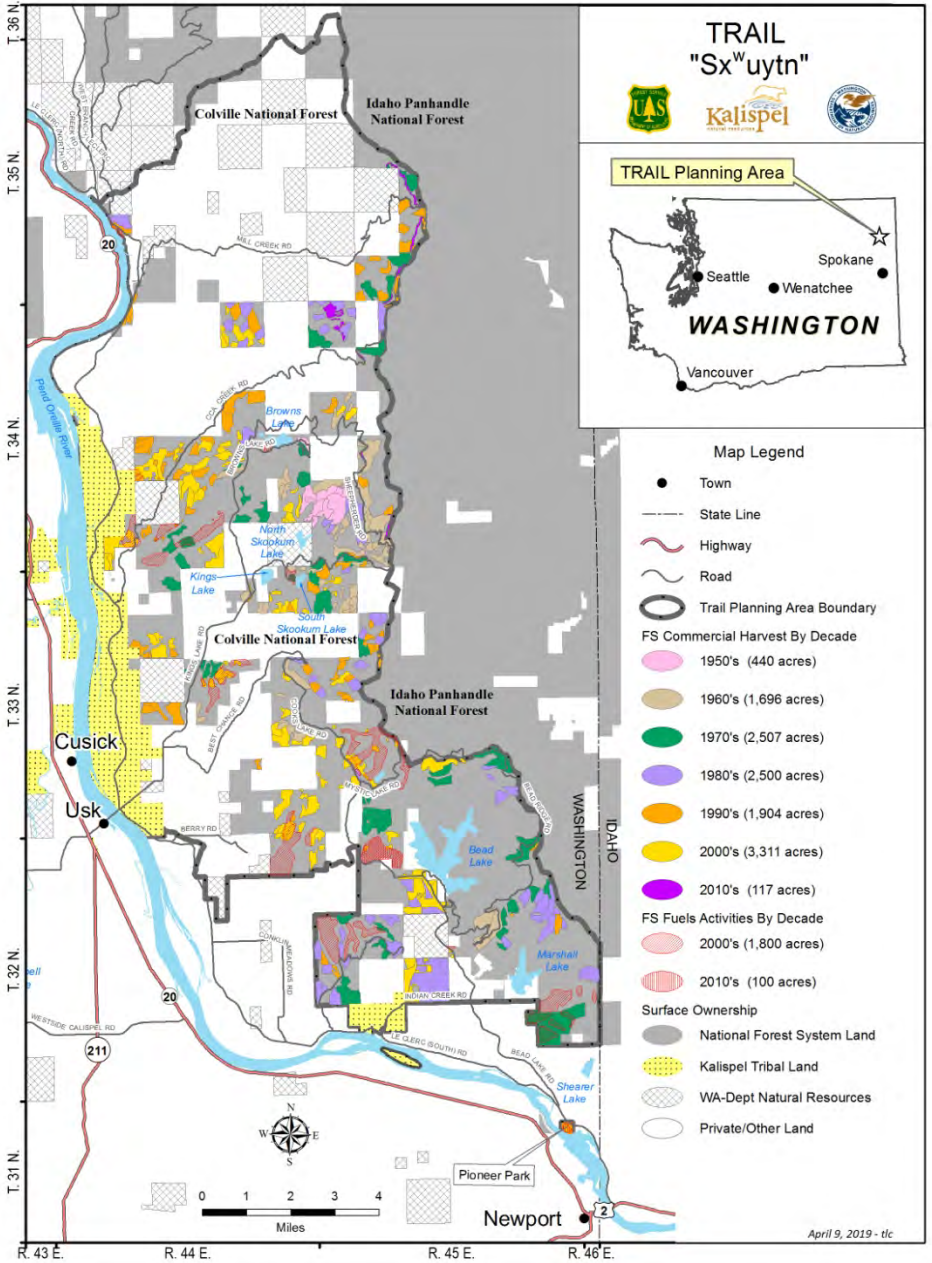
TRAIL PROJECT AREA



LAND OWNERSHIP WITHIN TRAIL

	ACRES	Percent of TRAIL
Colville National Forest	41,600	46%
Kalispel Tribe of Indians	3,700	4%
WA. State DNR	8,200	9%
Private Lands	37,000	41%
State Wildlife Lands	200	<1
<u>TOTAL ACREAGE =</u>	90,700	

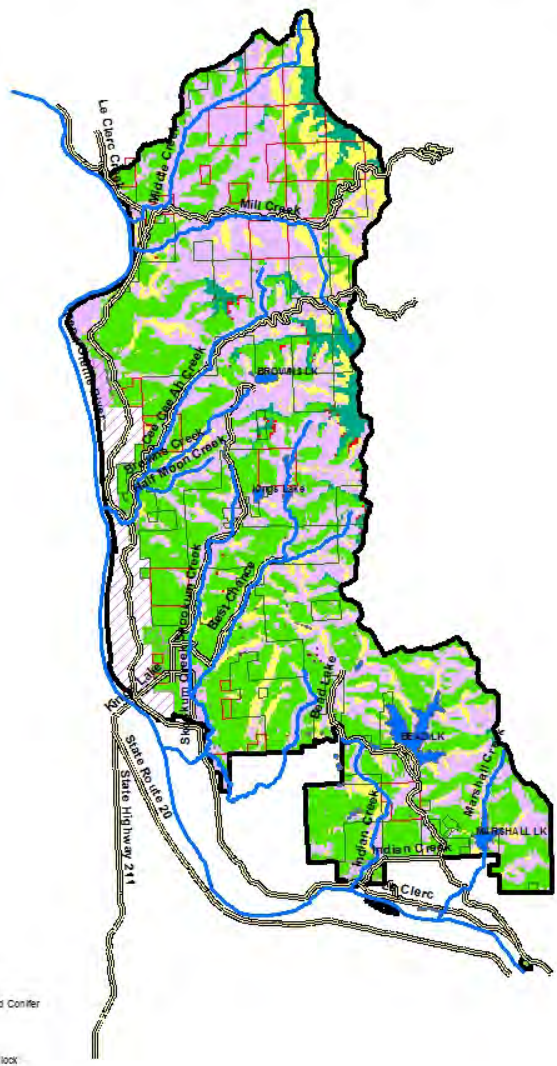
PAST ACTIVITIES



TRAIL VEGETATION TYPES



1:200,000



- Legend**
- Streams
 - Roads
 - Trail Project Boundary
- Ownership**
- WADNR
 - USFS
 - Kallapoi Reservation
- Vegetation Type**
- Douglas-fir/ory
 - Non-Forest
 - Northern Rocky Mountain Mixed Conifer
 - Spruce/Subalpine fir
 - Subalpine Fir/Lodgepole pine
 - Western reocedar/western hemlock



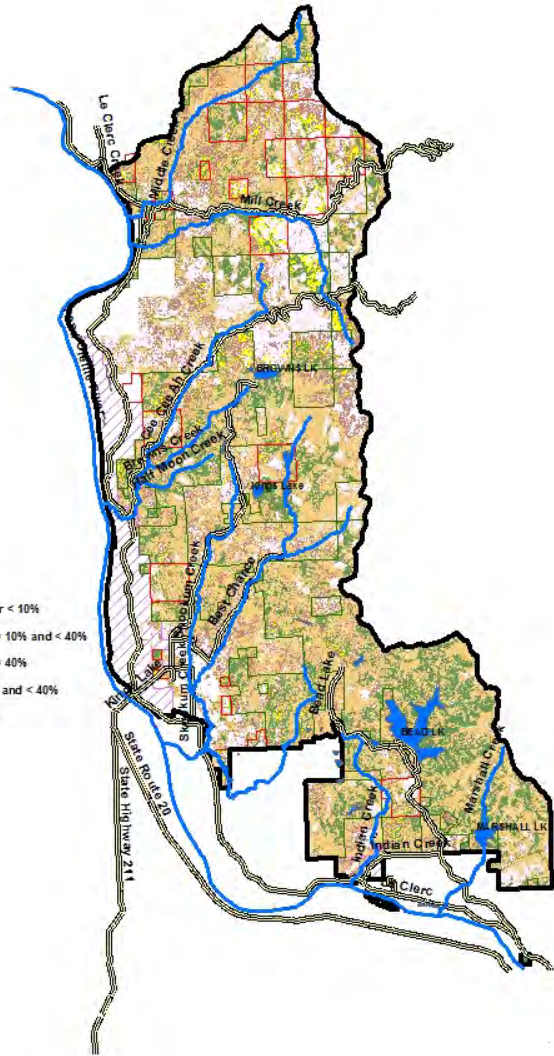
1:200,000

TRAIL STRUCTURE CLASSES

- Structure Classes are:
- EARLY
-Trees less than 10" DBH or canopy cover < 10%
 - MID OPEN
-Trees 10" to < 20" DBH, canopy cover \geq 10% and < 40%
 - MID CLOSED
-Trees 10" to < 20" DBH, canopy cover \geq 40%
 - LATE OPEN
-Trees \geq 20" DBH, canopy cover \geq 10% and < 40%
 - LATE CLOSED
-Trees \geq 20" DBH, canopy cover \geq 40%

Legend

- Streams
- Roads
- Trail Project Boundary
- Ownership
 - WADNR
 - USFS
 - Killapee/Reservation
- Structure Classes
 - 1 - Early
 - 2 - Mid Open
 - 3 - Mid Closed
 - 4 - Late Open
 - 5 - Late Closed



VEG & STRUCTURE TYPE PERCENTAGES

TYPE	STRUCTURE CLASS HRV %					
	EARLY	MID-OPEN	MID-CLOSED	LATE OPEN	LATE CLOSED	
	6-16	2-8	4-13	38-78	1-32	
	6.7	11.4	49.5	2.3	30.2	CURRENT CO
<u>Mountain Mixed</u>	9-25	1-3	18-30	4-6	44-60	
	7.8	5.3	51.4	1.0	34.4	CURRENT CO
<u>Rock/Western Red Cedar</u>	4-24	0	7-27	0	55-83	
	9.2	9.0	39.2	1.6	41	CURRENT CO
<u>Lodgepole Pine</u>	45-65	0	33-53	0	3	
	26.2	32.1	34.0	1.9	5.7	CURRENT CO
<u>pine Fir</u>	14-46	0	13-41	0	29-57	
	CNF TARGET		CURRENT WITHIN		CURRENT OUT	

EARLY --Trees less than 10" DBH or canopy cover < 10%

MID OPEN --Trees 10" to < 20" DBH, canopy cover >= 10% and < 40%

MID CLOSED --Trees 10" to < 20" DBH, canopy cover >= 40%

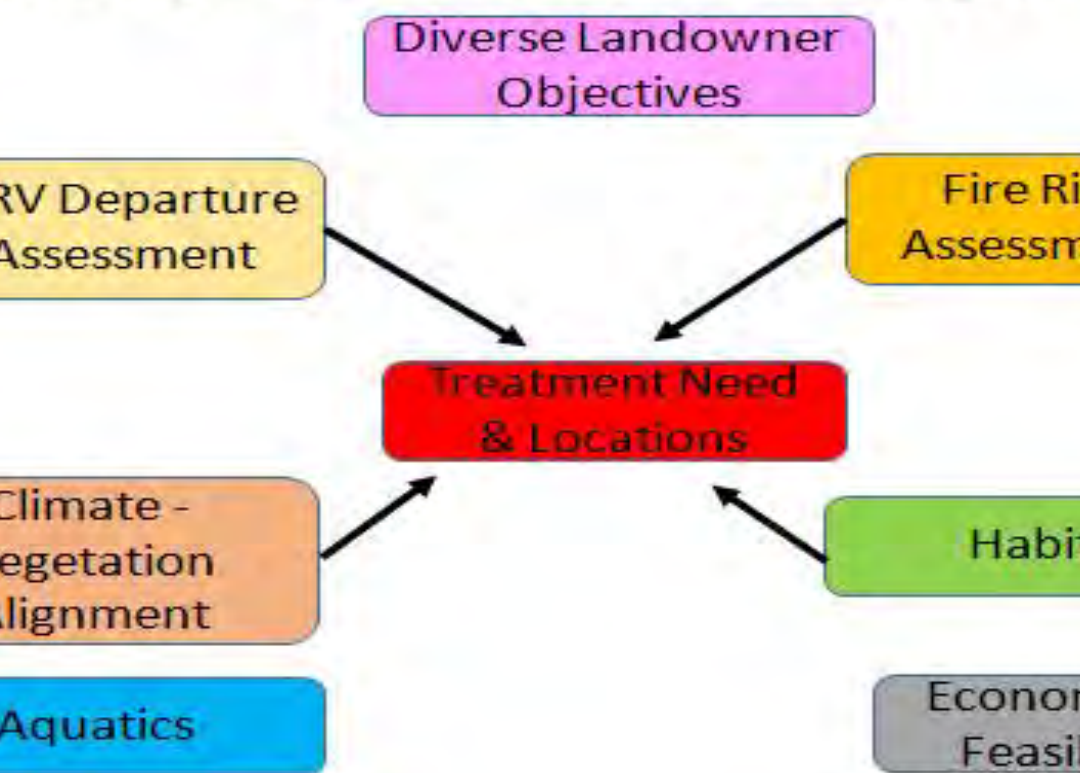
LATE OPEN --Trees >= 20" DBH, canopy cover >= 10% and < 40%

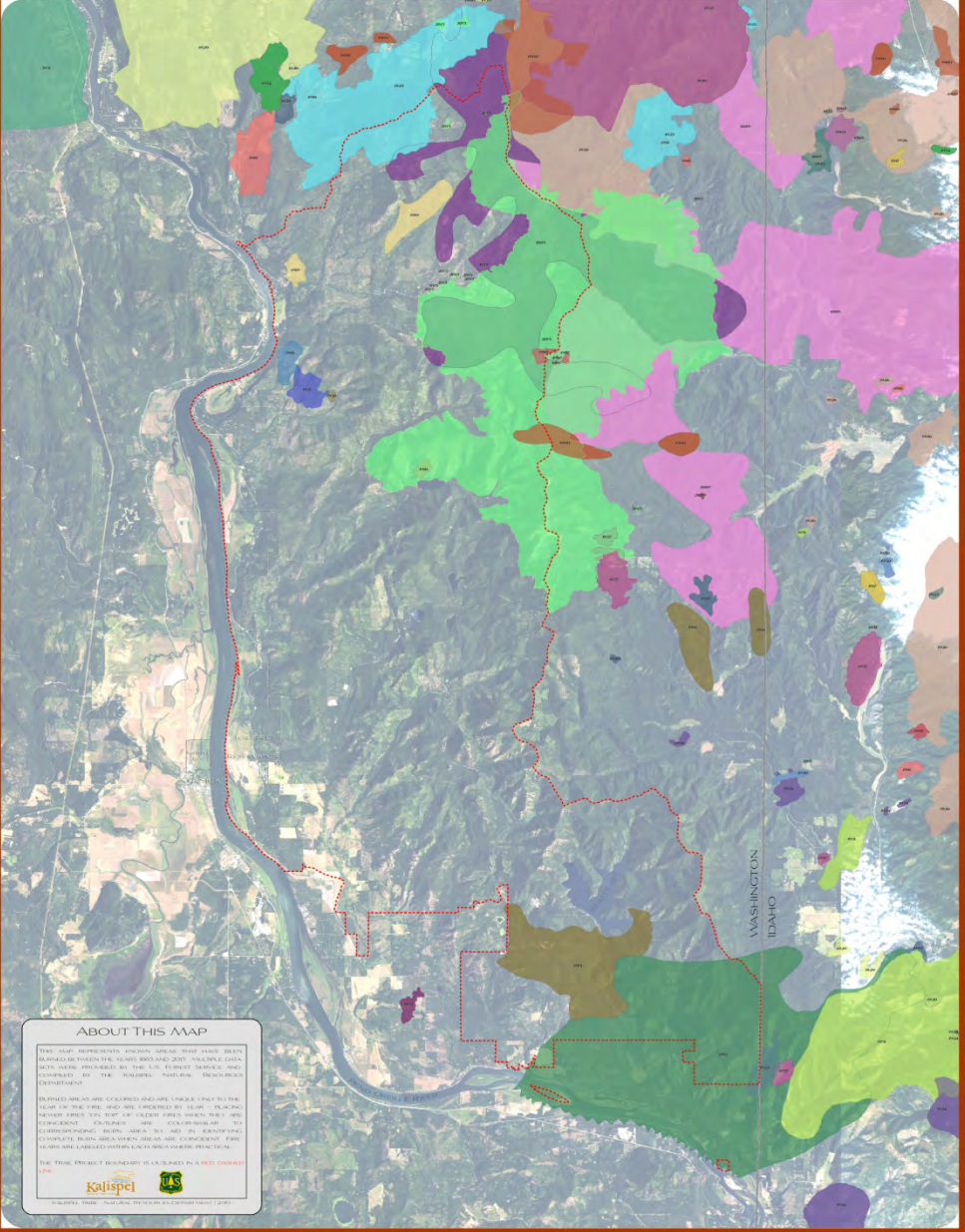
LATE CLOSED --Trees >= 20" DBH, canopy cover >= 40%



1. Early stand structure along County road, Tacoma Creek.
2. Mid open stand structure, existing plantation near Tacoma Creek.
3. Mid closed stand structure found throughout project area.
4. Late open stand structure example, courtesy BLM Nedsbar timber sale
5. Late closed stand structure, Unit 29 (unit removed from proposal).

Landscape Evaluations & Prescription





ABOUT THIS MAP

THIS MAP REPRESENTS KNOWN AREAS THAT HAVE BEEN BURNED BETWEEN THE YEARS 1889 AND 2015. POLYGLYPH DATA WERE OBTAINED BY THE LIS FOREST SERVICE AND COMPARED BY THE KALISPEL NATIONAL FIREWORKS DEPARTMENT.

BURNED AREAS ARE COLOURED AND ARE LINKED ONLY TO THE YEAR OF THE FIRE AND ARE NUMBERED BY YEAR - PLACING NUMBER FIRST THEN YEAR OF FIRST FIRE. WHEN THE ARE COLOURED - CALIFORNIA - ARE - OCCURRING IN THE CURRENT YEAR. BURNED AREAS TO AND BY IDENTIFYING CURRENTLY BURNING AREAS ARE COLOURED. FIRE NUMBER ARE LABELED OVER EACH AREA WHERE PRACTICAL.

THE TRAIL PROJECT BOUNDARY IS OUTLINED IN A RED DOTTED LINE.



© 2007 KALISPEL NATIONAL FIREWORKS DEPARTMENT 12007

