

# INDIAN CREEK COMMUNITY FOREST ***ACTION PLAN***



***MARCH 2019***



# ACKNOWLEDGMENTS

***Thank you to all of our Advisory Committee members and those who helped along the way:***

Adam Gebaur	JR Bluff
Alex Laughery	Keith Blatner
Andy Huddleston	Lucas Henderson
Anna Armstrong	Martha Nichols
Bob Gilrein	Matt Hobbs
Carol Mack	Matthew Berger
Chris Bachman	Michele Masuen
Colene Rubertt	Mike Jensen
Dana Bowers	Mike Nepean
David Bluff	Nathan Piengkham
David Marcell	Olivia Giannasi
Dixie Chichester	Randy Burke
Forrest Ownbey	Ryan Markel
Francis Cullooyah	Sandy Nichols
Gary Bailey	Sonya Scaufaire
Gayne Sears	Susan Hobbs
Guy Gifford	Tracy Morgan
John Floyd	Yolanda Bowman



*An open house for Indian Creek Community Forest.*

**All photos in this action plan are courtesy of the planning committee unless otherwise noted.**



# PLANNING TEAM

## **PLANNING TEAM MEMBERS**

Alex Stone, National Park Service

Mike Lithgow, Kalispel Tribe Natural Resources Department

Ray Entz, Kalispel Tribe Natural Resources Department

Stephanie Stroud, National Park Service

***For more information about Indian Creek Community Forest, you can visit:***

<https://www.kalispeltribe.com/kalispel-natural-resources-department/indian-creek-community-forest>

***Or you can contact:***

Mike Lithgow: (509) 370-8794, [mlithgow@kalispeltribe.com](mailto:mlithgow@kalispeltribe.com)



*The Indian Creek Community Forest action plan advisory committee.*

## **KALISPEL TRIBE OF INDIANS NATURAL RESOURCES DEPARTMENT (KNRD)**

KNRD was established in 1992 with the mission to “safeguard natural and cultural resources for the health and well being of Kalispel people.” KNRD is responsible for advancing the Kalispel Tribe’s sovereign interests in fish, wildlife, water, and other natural resources. KNRD’s duties include not only managing natural resources within the Kalispel Indian Reservation, but also working with federal, state, and other conservation partners to promote the Tribe’s sovereign interest in natural resources throughout its aboriginal territory.

For more information about KNRD, visit:

<https://www.kalispeltribe.com/tribal-news/natural-resources>


## **NATIONAL PARK SERVICE RIVERS, TRAILS AND CONSERVATION ASSISTANCE PROGRAM**

The National Park Service Rivers, Trails and Conservation Assistance (RTCA) program supports community-led natural resource conservation and outdoor recreation projects across the nation.

The RTCA program is a network of conservation and recreation planning professionals that partners with community groups, nonprofits, tribes, and state and local governments to design trails and parks, conserve and improve access to rivers, protect special places, and create recreation opportunities.

For more information about RTCA, visit: [www.nps.gov/rtca](http://www.nps.gov/rtca)





*While the past two centuries of the Kalispel people's existence have been difficult in many ways, we realize that 200 years is a blink of an eye in Kalispel history. Our present and future are hopeful; not only for our tribe, but for non-tribal community members as well.*

*Our land and our ancestors mean everything to us. They have always sustained us, and today, in new ways, they will continue to sustain us into the future. The foundation of our hospitality is nourishing and giving. Our strength is cordial and honorable. Gratitude and respect are expressed for the prosperity we share. In the future, we hope for a wonderful life.*

**The Kalispel Tribe of Indians**

# TABLE OF CONTENTS

---

<b>THE INDIAN CREEK COMMUNITY FOREST</b> .....	<b>1</b>
VISION.....	<b>3</b>
MISSION.....	<b>3</b>
 <b>CREATING THE ACTION PLAN</b> .....	 <b>4</b>
KALISPEL TRIBE ACQUIRES INDIAN CREEK FOREST.....	<b>4</b>
PLANNING ASSISTANCE FROM THE NATIONAL PARK SERVICE.....	<b>4</b>
THE PLANNING PROCESS.....	<b>5</b>
COMMUNITY ENGAGEMENT RESULTS.....	<b>6</b>
RECOMMENDATIONS FOR FUTURE ENGAGEMENT.....	<b>7</b>
 <b>THE ACTION PLAN</b> .....	 <b>8</b>
CRITERIA FOR PRIORITIZATION.....	<b>8</b>
NEW PROJECT CRITERIA FOR INDIAN CREEK.....	<b>8</b>
S.M.A.R.T. GOALS.....	<b>8</b>
 <b>IMMEDIATE PRIORITIES: 2019-2020</b> .....	 <b>9</b>
 <b>SHORT-TERM PRIORITIES: 2019-2022</b> .....	 <b>13</b>
 <b>LONG-TERM PRIORITIES: 2019-2025</b> .....	 <b>14</b>
 <b>MAKING IT HAPPEN</b> .....	 <b>16</b>
CREATING AN ADVISORY COMMITTEE.....	<b>17</b>
 <b>RESOURCES: FUNDING</b> .....	 <b>18</b>
 <b>RESOURCES: SUPPORT</b> .....	 <b>22</b>
 <b>HOW TO GET INVOLVED</b> .....	 <b>23</b>



*The beloved Bull Trout  
(Salvelinus confluentus),  
found in Indian Creek.  
Source: USFS*

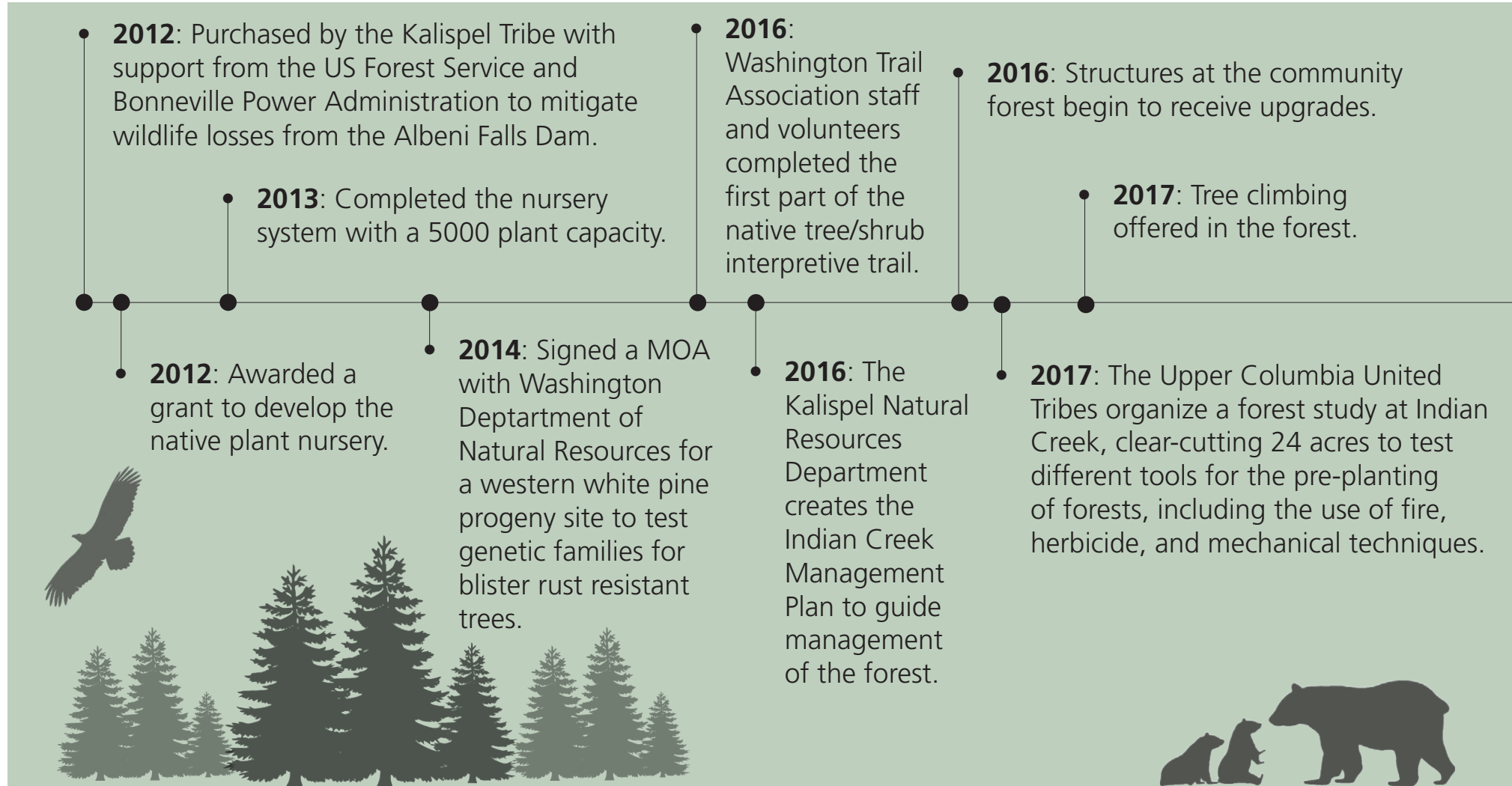


# THE INDIAN CREEK COMMUNITY FOREST

In 2012, the Kalispel Tribe entered into a Memorandum of Agreement (MOA) with the Bonneville Power Administration, U.S. Army Corps of Engineers, and Bureau of Reclamation to fund mitigation efforts related to Albeni Falls Dam. The MOA provides the Tribe with approximately \$40 million over 10 years to help meet the

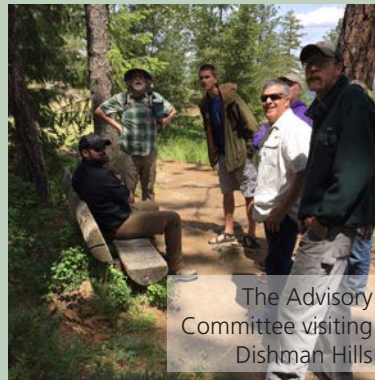
federal agencies' obligations under the Northwest Power Act and Endangered Species Act. KNRD uses this funding to conduct a wide variety of projects for the benefit of native fish, to improve wildlife habitat, and to acquire land as mitigation for lost wildlife habitat. The 550-acre Indian Creek property south of the Reservation is one of those projects.

## INDIAN CREEK TIMELINE



The Indian Creek Community Forest serves as a civic space that connects people to the natural world and strengthens social and cultural connections within the community. Forests are the defining feature of our watershed's landscape, yet few who reap the benefits of visiting a forest have an intimate awareness of the many wonders at work.

By welcoming community and encouraging connection with a living, working forest, a stronger sense of place and of our place within it will naturally follow. The forest can reconnect people with the natural environment, provide a refuge from the fast-paced world and foster community ties. The connections made in the forest can lead to thoughtful stewardship and understanding of our surroundings.



## VISION

The Kalispel Tribe Indian Creek Community Forest is a vibrant 350 acre setting for outdoor environmental education and recreation, with resources to serve participants of all ages while consistently managing for high-quality wildlife habitat.

## MISSION

To bring community forest partners together to guide and lead visitors to a better understanding and appreciation of the local forest ecosystem, and to inspire future natural resource careers and good land stewardship ethics by developing trails, facilities, and educational and interpretive materials.



*Indian Creek Community Forest provides year-round outdoor recreation and education for people of all ages.*





# CREATING THE ACTION PLAN

## **KALISPEL TRIBE ACQUIRES INDIAN CREEK FOREST**

When the Kalispel Tribe acquired the Indian Creek property in 2012, the intention was to develop a community forest. An initial management plan was created in 2016 to guide the management of the Indian Creek property, as part of the ongoing collection of properties that partially mitigate wildlife and habitat losses from the Albeni Falls Hydropower facility. While this means that habitat protection is the primary function of the Indian Creek property, the new community forest could also provide compatible low-impact recreation and conservation education. As the property owner, the Kalispel Tribe entrusted Kalispel Tribe Natural Resources Department (KNRD) with the day-to-day management of the community forest. Mike Lithgow, KNRD Information and Outreach Coordinator, was charged with creating an “action plan” for the community forest and this document provides guidance on fulfilling the Kalispel vision of extending civic, conservation, education and recreation opportunities at Indian Creek to meet community needs.

## **PLANNING ASSISTANCE FROM THE NATIONAL PARK SERVICE**

In 2017, KNRD applied for and was awarded assistance from the National Park Service Rivers, Trails and Conservation Assistance program (RTCA) to help create an action plan for the Indian Creek Community Forest. Using the Indian Creek Community Forest Management Plan as a guide, together they designed a community engagement process to create both an action plan to address opportunities for the broader community, and an advisory committee that could put the plan into motion and care for the forest long term.

## **THE PLANNING PROCESS**

To create the Action Plan, RTCA and KNRD, or the “planning team,” reached out to knowledgeable and interested community members to form a short-term advisory committee.

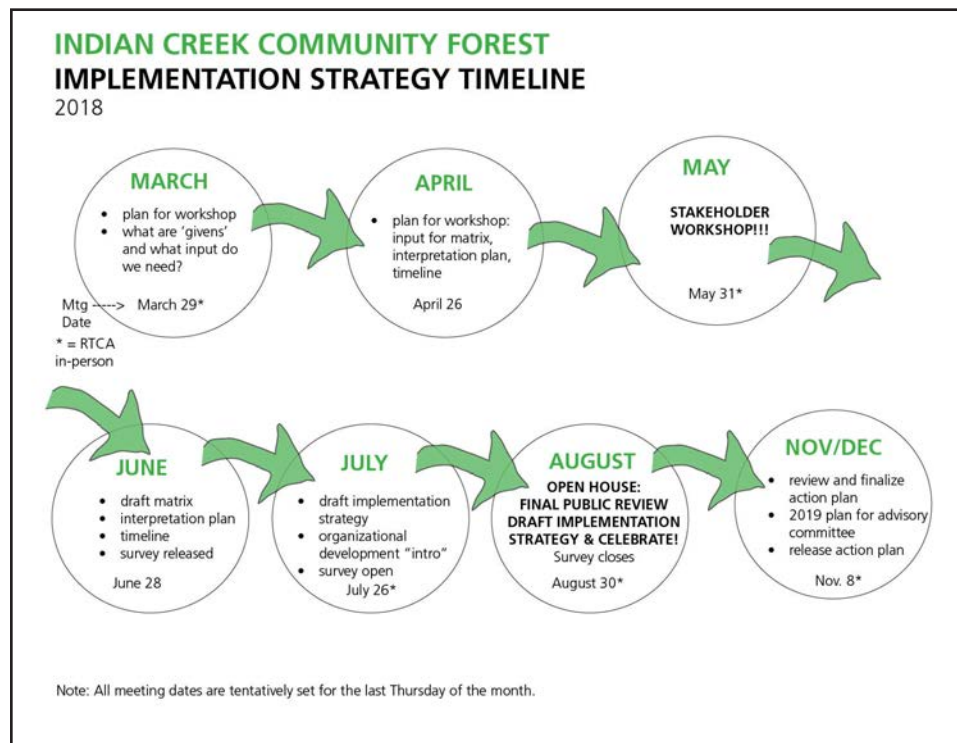


*View of the Pend Oreille River from Indian Creek Community Forest.*

## THE PLANNING PROCESS

Advisors were invited to monthly meetings to share their skills and expertise, gather ideas and help make decisions for the Indian Creek Community Forest. The advisory committee was tasked with adhering to the overarching goal of protecting the forest while finding ways to make Indian Creek Community Forest a special and relevant place for the whole community.

The advisory committee decided to create an online survey and hold community workshops and an open house to gather input from the community. Two workshops were held on May 31, 2018 (one during the day and one in the evening), and the survey was distributed June-September to collect feedback from those who were unable to attend the workshops.

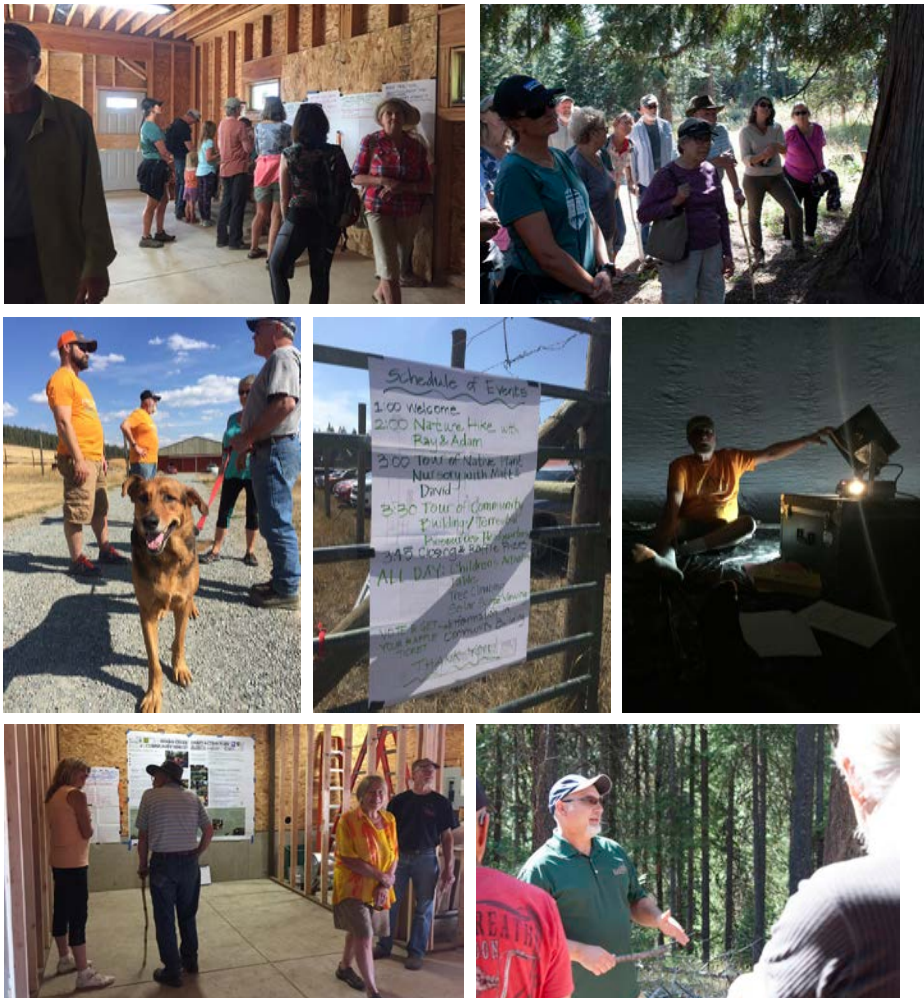


The planning timeline for the Indian Creek Community Forest Action Plan.



Community workshops held at the Camas Center in May 2018.





On August 30, 2018, an open house was held at Indian Creek, and at least seventy community members participated throughout the day. A family-style meal of Indian tacos was served. Participants had the opportunity to take part in various activities including tree climbing, an interpretive hike, a planetarium show, solar gazing, a raffle, and an interactive activity where they could share their ideas and learn more about the Indian Creek Community Forest. Questions about the community forest were answered by Ray Entz, Director of Wildlife and Terrestrial Resources, KNRD. At night, a star gazing event was held, demonstrating one of many opportunities that are possible at the forest.

## COMMUNITY ENGAGEMENT RESULTS

After holding two community workshops, an open house, and gathering input from the survey, the planning committee was able to get a sense of what the community would like to see at the forest. About 50 people attended the community workshops, 70 attended the open house, and 40 respondents completed the online survey. Nearly all input was from people over the age of 18. Most people who took the survey were between the ages of 40-65 and none were under 18; only three people lived on the Kalispel Indian Reservation.

*In general, the most-loved ideas are:*

- Integrate Native American culture into programming and site design
- Create accessible walking and hiking trails with interpretation
- Host volunteer and job-skill building opportunities
- Have hands-on educational opportunities for all ages, including forest management and fire prevention
- Have places for team building, picnicking, and an amphitheater for shows and education
- Have art, music and poetry along trails
- Create winter trails and facilities for snowshoeing, cross-country skiing, etc.
- Host regular community events and activities, year-round
- Keep the community informed about what is happening at the forest with a good communications plan

*Some other popular ideas are:*

- Pave Indian Creek Road to Bead Lake Road by collaborating with Pend Oreille County
- Live-streaming on website of wildlife cameras
- Offer native plants for sale
- Host community gardening space
- Host native plant workshops
- Reach out to other community groups, such as religious organizations



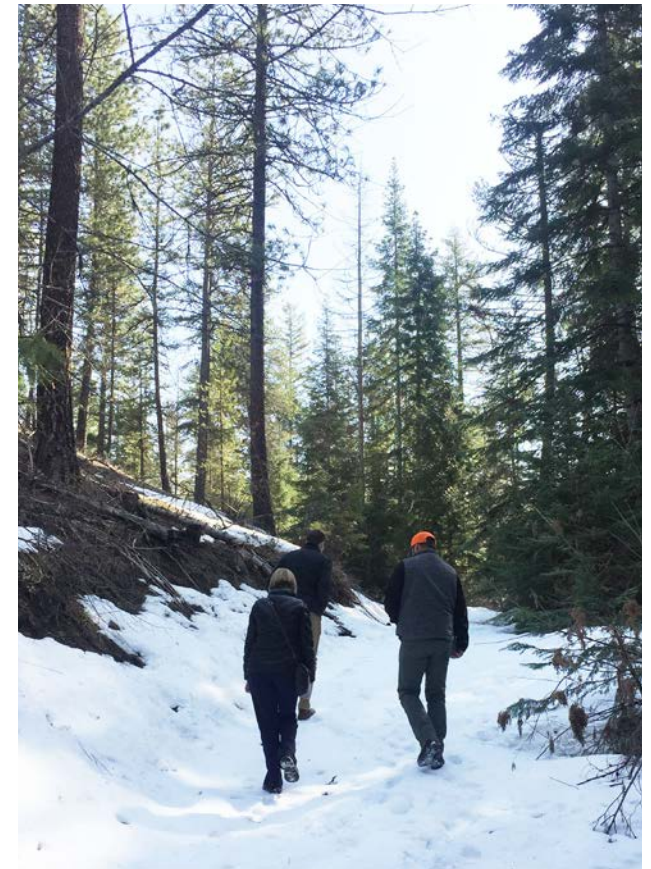
## RECOMMENDATIONS FOR FUTURE ENGAGEMENT

To best serve the community, additional work may be needed to gather input from youth under 18 and the Kalispel Tribal communities. Some ideas for how to accomplish this are:

- Have educators survey students who visit Indian Creek
- Host programs and events for young people and Tribal members to identify and share their needs and ideas for Indian Creek
- Reach out to community youth groups
- Meet with members of the Kalispel Tribe and conduct outreach at Tribal events/ programs
- Reach out to specific user and interest groups to participate in the site master planning process with students from Washington State University's landscape architecture program



*Indian Creek Community Forest can host many different types of activities and events, for all ages, throughout the year.*





# THE ACTION PLAN

## CRITERIA FOR PRIORITIZATION

Allowable activities at Indian Creek were initially outlined in the Indian Creek Management Plan, written by KNRD in 2016. The activities permitted in the community forest are those that promote healthy habitat and mitigate human impacts on wildlife; this includes compatible, low-impact recreation and education opportunities.

The management plan can be found here:

<https://9b37abdd1c3135d9659b-298f012ea728efea7c302ad9a6f7bba0.ssl.cf2.rackcdn.com/knrd/Final-Draft-Indian-Creek-Management-Plan-2016-with-BPA-Comments.pdf>

The following criteria was established by the Advisory Committee to choose new projects for the forest. These criteria adhere to the standards set in the management plan but integrate opportunities for the community to enjoy:

### NEW PROJECT CRITERIA FOR INDIAN CREEK

- ✓ Fulfills the **mission statement**
- ✓ Provides **ecosystem enhancement** and gives back to the forest
- ✓ Activity is **appropriate for the “zone”** (based on activities, i.e.: forest zone, development zone, etc.)
- ✓ **Native American culture** is integrated into the program and management whenever possible
- ✓ Projects are **feasible, safe, and provide protection** for the forest and wildlife
- ✓ The size and nature of the audience/project/program will have a **broad reach** (good community engagement)
- ✓ **Low impact** on the site and management
- ✓ **Benefits the local community**



An advisory committee meeting with the National Park Service in January 2018.

### S.M.A.R.T. GOALS

S.M.A.R.T. Goals are “specific, measurable, achievable, results-focused and time-bound” goals that help measure success. The advisory committee used S.M.A.R.T. goals as a tool for each priority action item for Indian Creek, so that they can measure whether or not they have achieved success after a set amount of time. This will help the committee to evaluate priorities at the community forest, and adapt and change goals over time as needed.



# IMMEDIATE PRIORITIES: 2019-2020

The following actions are the first and highest priorities for the Indian Creek Community Forest, to be completed by June 2020.

Action Item	Who	When	Resources Needed	Status	S.M.A.R.T. Goals
Establish Advisory Committee	Lead: KNRD Support: (New) Advisory Committee	Early 2019	See organizational diagram (page 22)	Planning started	<ul style="list-style-type: none"> <li>begin recruitment</li> <li>create by-laws</li> <li>create budget</li> <li>select a decision-making process</li> <li>establish non-profit fiscal partnership in 2019</li> <li>plan annual meeting (to break bread)</li> </ul>
Develop a site master plan and hold community design workshop with WSU Landscape Architecture students	Lead: KNRD Support: Advisory Committee	WSU class held February-May 2019	Site plan to include: circulation and parking; spaces for team building, outdoor education, and an amphitheater; interpretation and wayfinding; long distance trails/connections; areas/trails for winter sports; site management considerations. Workshop needs include: site inventory of needs; planned work to date; facilitation of one-two day workshop and site visit for students	Planning started	<ul style="list-style-type: none"> <li>develop conceptual site plan(s) in 2019</li> </ul>
Community forest curriculum for school groups	Lead: KNRD Support: Advisory Committee, Mobius, Pacific Education Institute	Early 2019	Contract with the Upper Columbia Children's Forest and consult with Mobius to create a curriculum tailored to ICCF.; funding for contract position	Planning started	<ul style="list-style-type: none"> <li>scaffolded education over time</li> <li>meet with tribal culture and language program in winter 2019</li> <li>create pilot program for hands-on K-12 curriculum (which accommodates 1-5 visits per year); secure grant funding to implement curriculum</li> </ul>



<i><b>Action Item</b></i>	<i><b>Who</b></i>	<i><b>When</b></i>	<i><b>Resources Needed</b></i>	<i><b>Status</b></i>	<i><b>S.M.A.R.T. Goals</b></i>
Create a site management plan for KNRD (maintenance, operations, parking, facilities, etc.)	Lead: KNRD Support: Advisory committee	2019	KNRD staff workshop	Not started	<ul style="list-style-type: none"> <li>• Host staff workshop to gather info for management plan</li> <li>• create a management plan document</li> <li>• create a volunteer corps for site management</li> <li>• create "to do list" for hot shot help</li> </ul>
Create an interpretive and wayfinding plan for ICCF with Tribal language and cultural content	Lead: Tribal Cultural Department Support: KNRD & Advisory Committee	2019-2020	Guidance on language, content and interpretation materials from Tribal Cultural Department, and cultural resource management program; refine themes and guidelines for site furnishings from WSU workshop	Not started	<ul style="list-style-type: none"> <li>• Short term: Create a welcome sign; map/plan for site; site for 5 species ID signs (10 species, 2 per sign)</li> <li>• Identify trails that need signage, amount of signage desired short and long term, location of signage, content and appearance</li> </ul>
Create a communications plan for ICCF	Lead: Advisory Committee Support: KNRD	2019	Use established communication network available through Kalispel Tribe. Create social media platform(s)	Website created; need to create plan and build a network	<ul style="list-style-type: none"> <li>• Website launch</li> <li>• press releases for events</li> <li>• cross promote with Camas Center</li> <li>• Have quarterly/seasonal column in Selkirk Sun &amp; Newport Miner with welcome, what's going on, visitor profiles, etc.</li> </ul>
Ongoing community engagement and outreach	Lead: Advisory Committee Support: KNRD	2019	Utilize existing personal connections with targeted populations (youth, Tribal members, etc.)	Started	<ul style="list-style-type: none"> <li>• Develop community engagement and outreach plan</li> <li>• Some techniques could be: on-site survey/comment cards; "where are you from map;" online check-ins</li> </ul>

<i>Action Item</i>	<i>Who</i>	<i>When</i>	<i>Resources Needed</i>	<i>Status</i>	<i>S.M.A.R.T. Goals</i>
Offer and host Tribal programs at the forest	Lead: Advisory Committee & KNRD	2019	Utilize existing programs and connections with Tribal community; build personal relationships	Currently hosting language class, field days and Culture Camp	<ul style="list-style-type: none"> <li>• Host a Tribal fishing pond related event/program</li> <li>• Incorporate other place-based programming</li> </ul>
Coordination with school groups (all levels of education)	Lead: Advisory Committee & KNRD	ongoing	Utilize existing connections with school groups; coordinate relationships and reserve facilities as appropriate; calendar for scheduling facilities; volunteers to help with coordination; coordination of storage	Planning started	<ul style="list-style-type: none"> <li>• Designate one volunteer to help with process</li> <li>• Create calendar for scheduling facilities</li> </ul>
Host seasonal events	Lead: Advisory Committee Support: KNRD, Pend Oreille Region Tourism Alliance	2019	Event planning; staff and volunteers to host; materials such as trees and equipment	Harvest Fest 2019 planning started	<ul style="list-style-type: none"> <li>• Arbor Day, Earth Day, etc.TBD</li> <li>• Host as opportunities arise</li> </ul>
Host regularly-scheduled family and community events (i.e. monthly; cultural events tied to Kalispel Tribe; Offer forestry tours for all ages)	Lead: Advisory Committee Support: KNRD	2019 and ongoing	Volunteers/staff to coordinate space and lead forestry tours; calendar of events; storage for event equipment/supplies	Not started; potential to host Star Parties now	<ul style="list-style-type: none"> <li>• Host a minimum of 1 per month starting in April</li> <li>• Bi-monthly workshops with a forest topic</li> <li>• Create a calendar on the website for January 2019 (coordinate with Tribal communications)</li> <li>• Host 4-5 tours for general public per year</li> </ul>



<i>Action Item</i>	<i>Who</i>	<i>When</i>	<i>Resources Needed</i>	<i>Status</i>	<i>S.M.A.R.T. Goals</i>
Create a long-distance interpretive trail; connect with USFS trail system	Lead: Advisory Committee & KNRD Support: Community volunteers	2019 + beyond; County Comp plan to be updated winter 2018-2019	Coordinate with NEPA process for the Tribal Forest Protection Act project ("Trail Project"). Include the ICCF Masterplan in Pend Oreille County Parks and Recreation Plan update. Coordination and engagement with adjacent landowners/ managers; funding for trail construction and interpretation; volunteer coordination and event planning.	Planning started	<ul style="list-style-type: none"> <li>• ICCF Masterplan incorporated into Trail NEPA document and Pend Oreille County Parks and Recreation Plan</li> <li>• Coordinate with Kalispel Tribe Masterplan (to integrate housing component of ICCF)</li> <li>• Coordinate with Tribal health plans</li> </ul>



Community members enjoying a meal together at the Indian Creek Open House in August 2018.

One major desire expressed by the community during the engagement efforts was to have the community forest become a gathering place for social activity. Pend Oreille county is rural and peaceful, which makes it an appealing place for many to call home. However across rural distances and without a civic center, it can be hard to find opportunities to get together and socialize with neighbors.

The community forest can be a welcoming place for the community to mingle, get to know each other, and take part in interesting activities and programs. Regularly-scheduled activities offered at the community forest can be not only enjoyable and educational for participants, but also fulfill a basic need in the community for social gathering amongst friends and neighbors.

The Indian Creek Community Forest can help strengthen the social fabric of the region, making for a more vibrant and resilient community.

# SHORT-TERM PRIORITIES: 2019-2022

The following actions are items that were identified as important to be completed within the next three years (2019-2022).

Action Item	Who	When	Resources Needed	Status	S.M.A.R.T. Goals
Educational programs for all ages, including adults (i.e. DNR/WSU programs; forestry; weaving; cultural)	Lead: Advisory Committee Support: KNRD	2019-2022	Volunteers/staff to design and host; event planning	Not started; potential to host Star Parties now	<ul style="list-style-type: none"> <li>Schedule one per quarter</li> <li>Inventory existing programs and volunteers</li> </ul>
Implement volunteer, citizen science, and stewardship programs that create a "habit" of monitoring	Lead: Advisory Committee Support: KNRD	2019-2022	Identified opportunities for volunteers/ citizen science/ stewardship; volunteers/staff to host; event planning	Planning started for bioblitz	<ul style="list-style-type: none"> <li>Coordinate with Selkirk Alliance for Science and the Global Learning and Observation to Benefit the Environment (GLOBE)</li> </ul>
Utilizing research information and connecting to research possibilities (white pine progeny; maintain connections with universities)	Lead: KNRD Support: Advisory Committee	2019-2022	Utilize existing connections with universities and research contractors; fulfill agreements in Management Plan	Started and on-going	<ul style="list-style-type: none"> <li>Ongoing open communication</li> <li>TBD as management progresses</li> </ul>
Create a "technology-friendly space" (i.e. such as an area with wildlife cameras)	Lead: Advisory Committee & KNRD	2019 and beyond	Siting and design of space; funding for installation of cameras/tech; coordination with website or other platform	Planning started	<ul style="list-style-type: none"> <li>App created and "regularly used" by 2022</li> </ul>

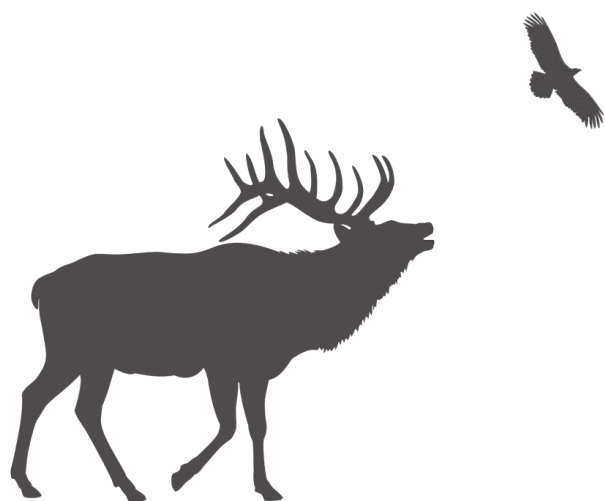


# LONG-TERM PRIORITIES: 2019-2025

The following priorities will take more time, resources and planning and should be completed within the next six years (2019-2025).

<i><b>Action Item</b></i>	<i><b>Who</b></i>	<i><b>When</b></i>	<i><b>Resources Needed</b></i>	<i><b>Status</b></i>	<i><b>S.M.A.R.T. Goals</b></i>
Install permanent educational signage and interpretive materials	Lead: Advisory Committee & KNRD Support: Kalispel Culture Department; community volunteers	2019 and beyond	signage and interpretive plan; funding for educational and interpretive materials; volunteer coordination and event planning	Not started	<ul style="list-style-type: none"> <li>Permanent signs installed along trail by 2025</li> </ul>
Install winter sport trails and amenities	Lead: Advisory Committee & KNRD Support: Community volunteers	2019 and beyond	Regional trails plan; funding for installation of trail and amenities; coordination with volunteers; event planning	Not started	<ul style="list-style-type: none"> <li>Winter trail marked and identified</li> <li>Warming hut and possible rental by 2025</li> </ul>
Expand formal partnerships	Lead: Advisory Committee Support: KNRD	2019 and beyond	Coordination with Kalispel Tribe legal team	Not started	<ul style="list-style-type: none"> <li>Working agreements with three new partners by 2024</li> </ul>
Foster job skill training for natural resource careers, especially for Tribal members	Leads: Advisory Committee and KNRD Support: Kalispel Career Training Center	2019 and beyond	Outreach and support; ability to provide low-interest loans for equipment	Not started	<ul style="list-style-type: none"> <li>Host high school students to observe active forest management activities once per year</li> <li>Track the number of tribal members employed in natural resource careers (through internships or as staff)</li> <li>Offer scholarships for natural resource education</li> </ul>

<i>Action Item</i>	<i>Who</i>	<i>When</i>	<i>Resources Needed</i>	<i>Status</i>	<i>S.M.A.R.T. Goals</i>
Grow and expand the community forest	Lead: KNRD Support: Advisory Committee	2019 and beyond	Building and expanding partnerships	Planning started	<ul style="list-style-type: none"> <li>Add 60 acres by 2020</li> </ul>
Tourism opportunities and benefits	Lead: Advisory Committee Support: Pend Oreille Region Tourism Alliance	2019 and beyond	Utilize existing local publications and connections	Not started	<ul style="list-style-type: none"> <li>Promote ICCF at Windfall Store at Spokane Casino and new casino in Cusick</li> <li>Publish ads in publications such as Pend Oreille Magazine</li> </ul>
Integrate art, music, or poetry along trails	Lead: Advisory Committee or interested volunteer Potential Support: River Arts Alliance	2019 and beyond	Encouragement for community volunteer/ resident artist to activate the space; could potentially be more permanent art installation; coordination with Tribal artists; coordinate with River Arts Alliance	Not started	<ul style="list-style-type: none"> <li>Potential measures could be Artist-in-Residence programs or the number of art installations over given period of time</li> </ul>





# MAKING IT HAPPEN

---

Volunteers are crucial to the success of the Indian Creek Community Forest!



*The Indian Creek Action Plan Advisory Committee, November 2018.*

## CREATING AN ADVISORY COMMITTEE

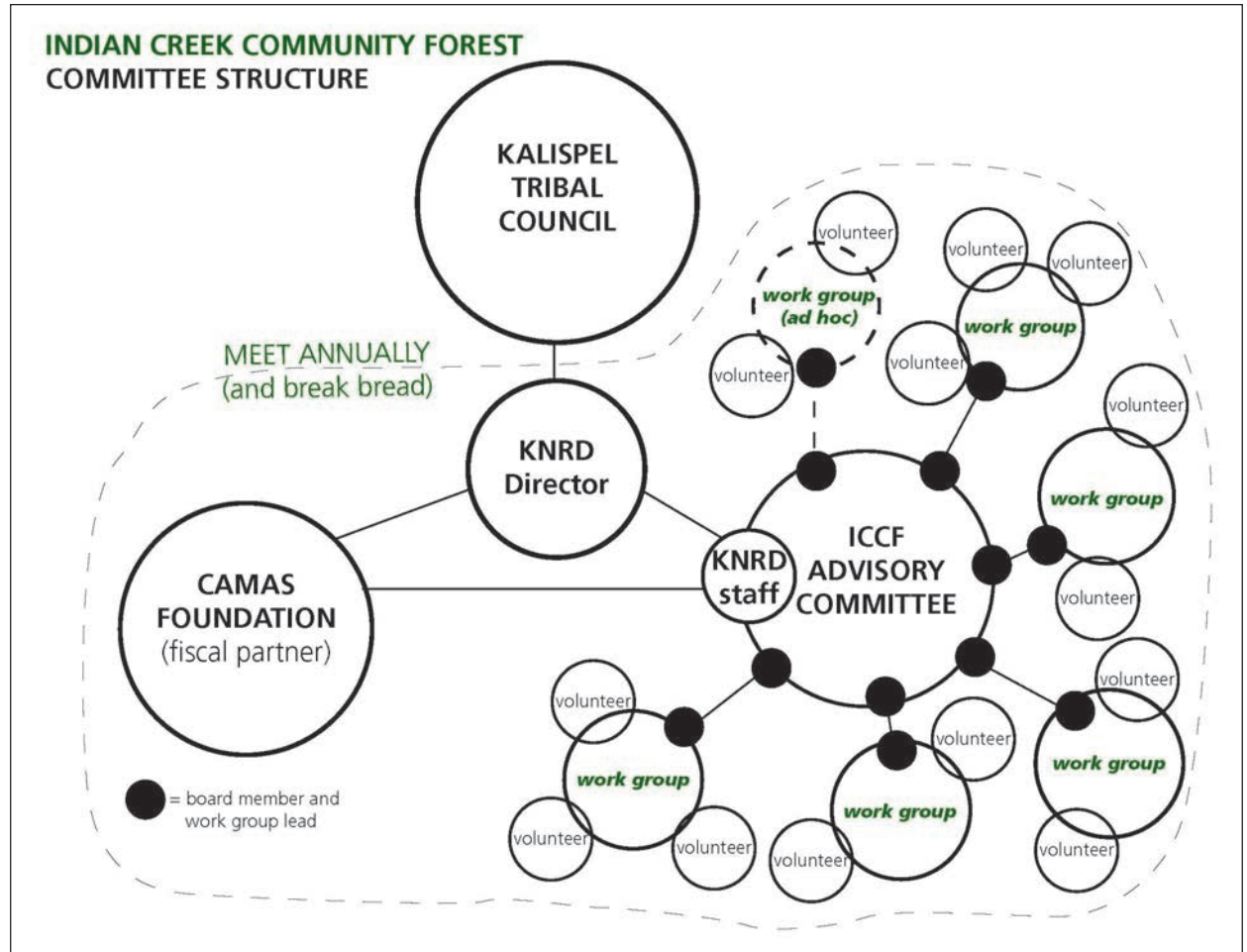
An advisory committee will be created to implement this action plan, to organize and manage community programs, and to support planning and design for the community forest for many years to come.

While KNRD is responsible for managing forestry practices, wildlife, and habitat for the forest, the advisory committee will provide the link between the community and the forest with a focus on recreation and education. The advisory committee will include one representative from KNRD, and members will serve on and manage as-needed (ad hoc) “work groups.”

Questions that the advisory committee will need to answer in their first year will be:

- Defining what the term “advisory” means
- Defining which decisions the advisory committee will make, and when and how are they made
- Deciding when *all* Indian Creek leadership (Camas Foundation, KNRD, Advisory Committee, and volunteers) can meet annually to collaborate for the next season (likely in winter time)
- Deciding when to evaluate success for the year, and how to write and share an annual report of findings
- Deciding how and when to meet and “break bread” to celebrate a year’s progress at the community forest
- How the Advisory Committee relates to and works with the Tribal Council and Tribal membership

## INDIAN CREEK COMMUNITY FOREST COMMITTEE STRUCTURE



The advisory committee should plan to meet annually and “break bread” with all who are involved with the Indian Creek Community Forest. This occasion could serve as a way to check-in, evaluate and celebrate success, and plan for the future. Advisors should also decide when to meet to evaluate success, and create and release an annual report and keep the public informed about milestones and progress.

One way to meet and break bread with all who contribute to the forest is to hold an open house every summer at Indian Creek. It can be modeled on the open house held in August 2018. An open house can serve as an opportunity to have a meal together, share the annual report, and, if open to the public, can keep the community informed about everything available to them at the community forest.



# RESOURCES: FUNDING

---

The following is a list of some resources at the federal, state, national and local level that can be used to fund the Indian Creek Community Forest. Like the forest, this list should continue to grow and change over time!

## **Federal**

🌲 ***There is a federal website to search for grants:***  
<http://www.grants.gov/>

🌲 ***EPA Environmental Education Grants***

Under the Environmental Education Grants Program, EPA supports environmental education projects that promote environmental awareness and stewardship and help provide people with the skills to take responsible actions to protect the environment. This grant program provides financial support for projects that design, demonstrate, and/or disseminate environmental education practices, methods, or techniques (e.g., interpretive signs, exhibits, websites, brochures, etc). See <http://www.epa.gov/enviroed/grants.html>

🌲 ***U.S. Forest Service Cooperative Programs***

The Forest Service's State and Private Forestry program reaches across the boundaries of National Forests to states, tribes, communities, and non-industrial private landowners. They provide technical and financial assistance to landowners and resource managers to help sustain the nation's forests and protect communities and the environment from wildland fires. Visit <http://www.fs.fed.us/r6/coop/programs/rca/economic.htm>

🌲 ***BPA Tribal Education & Capacity Building Program***

The Bonneville Power Administration's Tribal Education and Capacity Building Grant program provides funding assistance to federally recognized tribes to advance awareness and understanding of the BPA mission. BPA is requesting proposals that support tribal education programs in science, technology, engineering, math, and natural and cultural resource management. Proposals should be designed to strengthen the capacity of tribes, support government-to-government relationships and provide education opportunities regarding the operation of the Federal Columbia River Power System, Federal Columbia River Transmission System or integrated Fish and Wildlife Program.

Specifically, projects should advance participants awareness and understanding of electrical generation and transmission, energy efficiency, hydropower, environmental stewardship of the Columbia River basin habitat and ecosystems and cultural resource management.

Up to \$100,000 is available for grants to be completed in fiscal year 2019. Individual grants awarded will not exceed \$20,000. Tribes may submit more than one application, however, if multiple applications are ranked for selection, only the application with the higher score will be considered.

The grant application is available at <https://www.bpa.gov/news/Tribal/Grants/Request-for-Applications.pdf>

## State

### 🌲 **Washington State Recreation and Conservation Office**

The Recreation and Conservation Office (RCO) provides leadership, funding and technical assistance to help build community parks, trails, boating facilities, water access, firearm and archery ranges, off-road vehicle areas, and athletic fields. The RCO also protects and restores diverse wild areas by protecting and restoring habitat, conserving working farms and forests, and investing in and tracking salmon health and recovery. The RCO provides outdoor education and recreation through the No Child Left Inside program (NCLI). Find a list of all RCO grants with more information at <https://rco.wa.gov/grants/index.shtml>

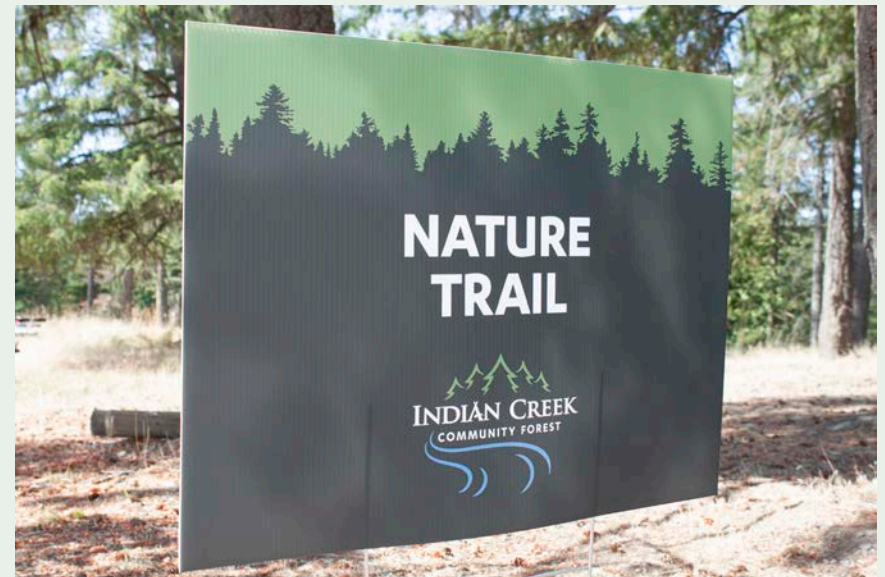
RCO Grant Programs include:

- **ALEA** [Aquatic Lands Enhancement Account](#)
- **BFP** [Boating Facilities Program](#)
- **BIG** [Boating Infrastructure Grant Program](#)
- **ESRP** [Estuary and Salmon Restoration Program](#)
- **FARR** [Firearms and Archery Range Recreation Program](#)
- **FBRB** [Brian Abbott Fish Barrier Removal Board](#)
- **FFFPP** [Family Forest Fish Passage Program](#)
- **LWCF** [Land and Water Conservation Fund](#)
- **NCLI** [No Child Left Inside](#)
- **NOVA** [Nonhighway and Off-Road Vehicle Activities Program](#)
- **PSAR** [Puget Sound Acquisition and Restoration Fund](#)
- **RTP** [Recreational Trails Program](#)
- **WWRP** [Washington Wildlife and Recreation Program: Farmland Preservation and Forestland Preservation](#)
- **YAF** [Youth Athletic Facilities](#)

It also includes the [Salmon Recovery program](#).

### 🌲 **Washington State Department of Commerce**

The Washington State Department of Commerce offers many grants and loans for community facilities, community services/ crime victims, energy, housing and homelessness, planning and infrastructure, and small business assistance. Read more about all of the available opportunities at <https://www.commerce.wa.gov/open-grants-loans/>



*Grants from the RCO could fund trails, signage, and other amenities at Indian Creek.*



## **Potential Local and Regional Funding Sources and Planned Giving**



### ***Innovia Foundation***

Innovia works to improve access to education, promote health and wellbeing, support arts and culture, create economic opportunity and enhance quality of life. Learn more at <https://innovia.org/>



### ***The Keta Legacy Foundation***

Protecting and connecting with the habitat, mountains, water, and natural history of the Salish Sea region. Visit <https://ketalegacy.org/>



### ***Northwest Area Foundation***

The Northwest Area Foundation supports organizations anchored in the culture of the people they serve and dedicated to expanding economic opportunity for Native communities, communities of color, immigrants, refugees, and rural communities. See <https://www.nwaf.org/for-grantseekers/>



### ***Pend Oreille County Economic Development Council***

Pend Oreille County EDC provides a variety of programs and services to support local communities, businesses and other organizations in Pend Oreille County. Visit <http://pocedc.org/>



### ***Pend Oreille County Public Utility District Revolving Fund***

Economic Development Revolving Fund is a blended component unit within the electric system. Information concerning the Economic Development Revolving Fund may be obtained by contacting the District's financial department. See [www.popud.org](http://www.popud.org) or call the financial office at (509) 447-3137.



### ***Pend Oreille County Hotel/Motel Tax Fund***

The hotel/motel tax fund can be used solely for the purpose of paying all or any part of the cost of tourism, promotion, acquisition of tourism-related facilities, or operation of tourism-related facilities. See more information and apply at <https://pendoreilleco.org/your-government/commissioners/hotel-motel/>



### ***Newport City Hotel/Motel Tax Fund***

To be used solely for the purpose of paying all or any part of the cost of tourism promotion, acquisition of tourism-related facilities, or operation of tourism-related facilities. Applications due two weeks prior to event. Application available online at <http://www.newport-wa.org/files/HotelMotelApp.doc>



### ***Spokane Teachers Credit Union (STCU)***

As a member-owned financial cooperative, STCU provides broad community support of education, arts and culture, and local causes consistent with STCU's mission and purpose. Learn more at <https://stcu.org/here-for-good/community/giving>



## **National Philanthropy and Planned Giving**



### ***Sustainable Forestry Initiative (SFI)***

The SFI program is advancing its long-standing commitment to forest research across the United States through its conservation research grants. SFI-funded projects provide the science-based data and tools resource professionals and forest landowners of all sizes need to improve forest management. The work complements existing government initiatives and is directly linked to objectives in the SFI 2015-2019 Standard, including measures to protect water quality, biodiversity, wildlife habitat and species at risk, Forests with Exceptional Conservation Value, and to encourage community involvement. Grants are available for conservation and community education for low-income families. Visit <http://www.sfiprogram.org/>



### ***REI***

REI invests in community projects nationwide to reduce barriers to the outdoors. Visit [www.rei.com/aboutrei/grants02.html](http://www.rei.com/aboutrei/grants02.html) or email [reigives@rei.com](mailto:reigives@rei.com) to learn more.



### ***Walmart***

Walmart offers grants that align with their areas of focus: opportunity, sustainability, and community. To learn more visit <http://walmartstores.com/CommunityGiving/8979.aspx>

## **Other Resources**



***The Environmental Grantmakers Association (EGA)*** is a membership association of environmental funders. EGA offers information for grant seekers looking for funding sources. See their list of available grants and other resources at <https://ega.org/collaborate/grant-seekers>



### ***Foundation Center's Guide to Grants***

The Foundation Center delivers knowledge, transparency, and expert guidance to fund raisers and grant makers solving social problems through philanthropy. See more at [www.fdncenter.org/pnd](http://www.fdncenter.org/pnd)





# RESOURCES: SUPPORT

The following is a list of local organizations to reach out to and potentially partner with.

## **Community Forests/Local Partnerships**

- Sustainable Northwest Community Forest Coalition
- Priest River Community Forest Connection
- Spokane County and Dishman Hill Conservancy

## **Volunteers and Resources for Conservation**

- Washington Trails Association
- Selkirk Conservation Alliance
- Ducks Unlimited
- Pacific NW Trail
- Audubon societies
- Local experts: foresters, mycologists, etc.
- North Pend Oreille (PO) scenic byways
- PO bicycle groups
- PO canoe & kayak groups
- Scouts programs
- Safari Club (John Floyd)

## **Schools and Education**

- Whitworth University
- Selkirk Alliance for Science
- Washington State University
- Project Wild
- Local school districts
- Homeschool programs
- Pacific Education Institute
- The Global Learning and Observation to Benefit the Environment (GLOBE)
- Mobius

## **Other Organizations**

- River Mountain Assisted Living
- Riverview Bible Camp
- Hospitality House
- Evergreen Arts
- 4-H
- Chambers of commerce
- USAF Survival School
- Boys and Girls Clubs of America
- River Arts Alliance
- Historical societies & museums
- Tiger Historical Center
- Pacific Northwest Research Station
- CREATE Arts
- Veterans groups
- Library programs
- Special Olympics
- Senior centers
- Cutter Theater



*Partnerships are the lifeblood of Indian Creek Community Forest.*

# HOW TO GET INVOLVED

Are you interested in getting involved with the Indian Creek Community Forest? There are many different opportunities for educators, volunteers, and anyone else that is interested in getting involved in planning and coordination of recreational and educational programs and facilities at the community forest.

To learn more about Indian Creek, visit our website:

<https://www.kalispeltribe.com/kalispel-natural-resources-department/indian-creek-community-forest>

Also, you can contact Mike Lithgow at (509) 370-8794, or by email: [mlithgow@kalispeltribe.com](mailto:mlithgow@kalispeltribe.com)

